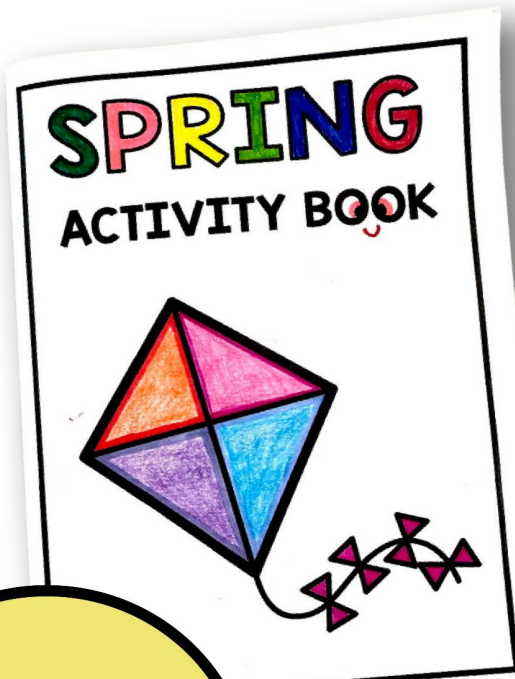


SPRING

ACTIVITY PACK



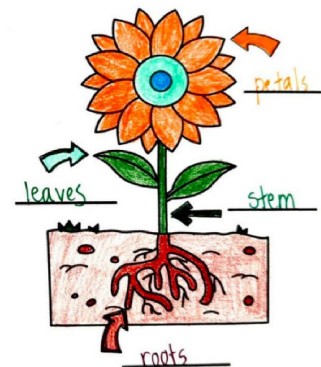
COLOR BY NUMBER

- 1 = red 6 = green
2 = yellow 7 = light green
3 = light blue 8 = pink
4 = blue 9 = orange
5 = purple
- Ladybug heads, dots, and abdomens are all BLACK



PARTS OF A FLOWER

Use the word bank to label the parts of this flower. Then color the flower.



WORD BANK:

stem roots leaves petals

GRADES
2-5

14 Ready-to-Print Activities

14 SPRING ACTIVITIES



14 activities include a number, a scavenger hunt, word scramble, 2 word searches, acrostic poem writing and more!

READY TO PRINT

ZERO prep! Just print and go!

SPRING ANTONYMS

Antonyms are opposites. Write the words on the line. Then draw a line to connect the opposites. Use the word bank if you need help.

The worksheet features several illustrations: a thermometer with a sun, a glass of juice, an empty jar, a sock, a jar with a bee, a sock with snow, a jar with a bee, a thermometer with a blue liquid, a globe with a moon, a globe with a sun, and a glass of juice. Lines connect these illustrations to their antonyms: hot to cold, full to empty, outside to inside, clean to dirty, day to night, and empty to full.

WORD BANK

day	cold
inside	dirty
full	outside
hot	clean
night	empty

NAME-THAT-GNOME

Alliteration is when two words begin with the same letter or sound. The names Cheery Charlie or Funny Frances are alliteration.

Give each gnome below an alliterative name. Then color the gnomes.



Sunny Sam



Butterfly Bo



Strawberry Stu



Darling Daisy

EASY ASSEMBLY

SPRING A-Z



Can you think of one spring word for each letter of the alphabet?

A _____ N _____
B _____ O _____
C _____ P _____
D _____ Q _____
E _____ R _____
F _____ S _____
G _____ T _____
H _____ U _____
I _____
J _____
K _____
L _____
M _____ Z _____



WEATHER WORDS

Unscramble the spring weather words.

rdetunh _____
anir _____
dwiyn _____
noatdro _____
ewd _____
ramw _____

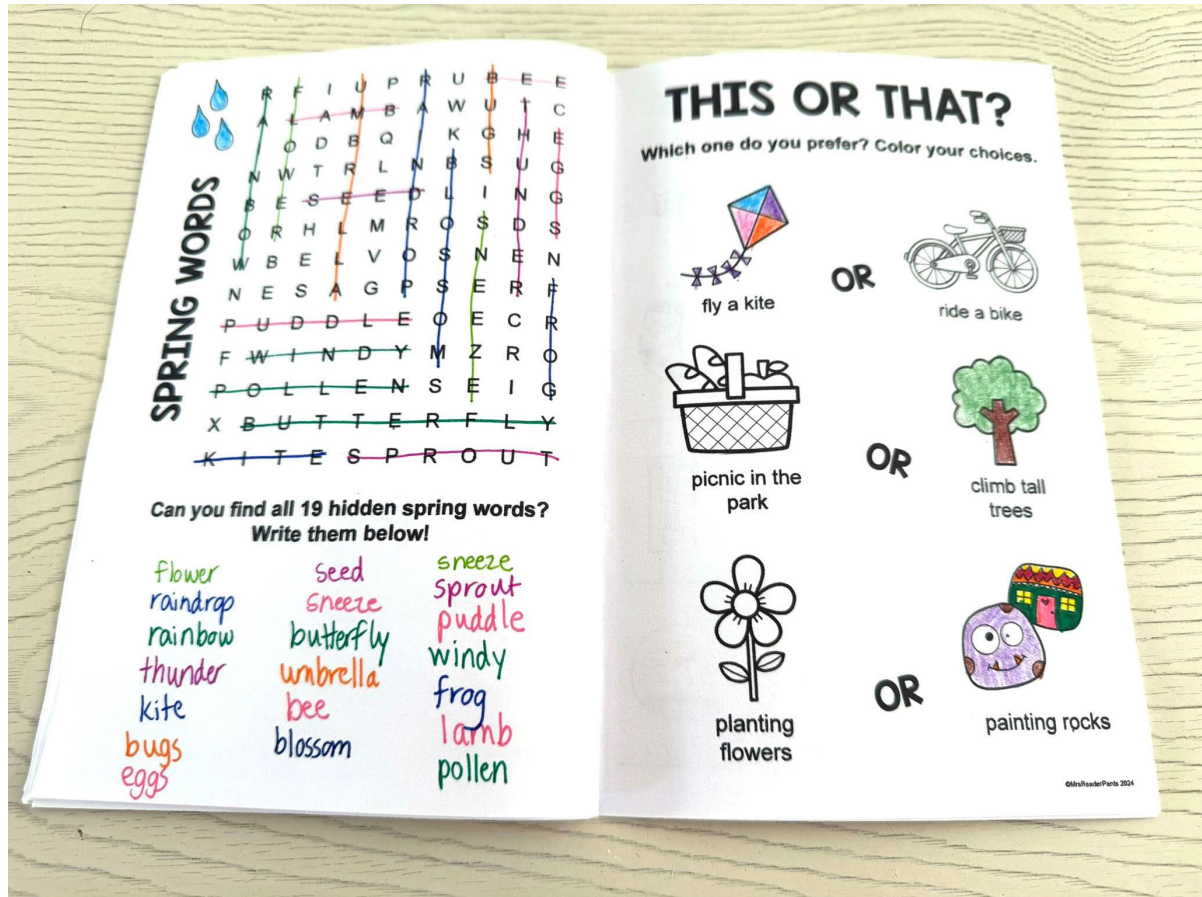
tihnnig _____

Extra space is included around the fold, so nothing gets cut off when the booklet is stapled.

©MrsRaccoonPrints 2021

To assemble the booklet: Print all pages. Fold booklet down the middle and staple using a long-arm stapler.

GREAT FOR SUBS



Students love these activities! Some are easy, and others are more difficult. It's a great way to keep students engaged while you are away.

ANSWER KEYS INCLUDED

SPRING ANTONYMS

Antonyms are opposites. Write the words on the line. Then draw a line to connect the opposites. Use the word bank if you need help.

hot

full

outside

clean

dirty

night

inside

cold

empty

WORD BANK

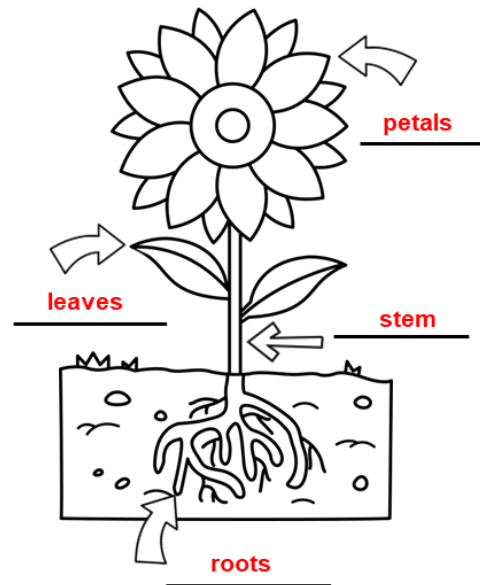
day	cold
inside	dirty
full	outside
hot	clean
night	empty

day

The activity shows various icons (thermometer, drink, jar, sock, jar, sock, night sky, thermometer, glass, sun) with lines for writing antonyms. Red arrows connect the words to their opposite icons: hot to cold, full to empty, outside to inside, clean to dirty, and night to day.

PARTS OF A FLOWER

Use the word bank to label the parts of this flower. Then color the flower.



WORD BANK:

stem roots leaves petals

INCLUDES FIVE COVER OPTIONS



Varied covers give students choice and help them quickly identify their own booklet.